
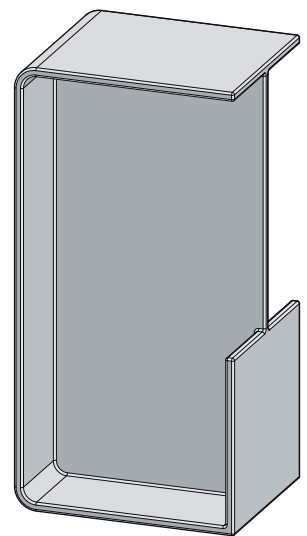


# KUBE

cod.	x	Descrip.
53335	35	
53340	40	
53345	45	
53350	50	

**Cualquier otro espesor de puerta, sobre pedido.**  
Any door thickness available on request.  
*Toute epaisseur de porte sont disponibles sur demande.*

**AISI 304, mate. Tolerancias generales del plano: ±0,5mm.**  
AISI 304, matte. General tolerances of technical drawing: ±0,5mm.  
*AISI 304, mat. Tolérance générale du plan technique: ±0,5mm.*



# i-4250